

weco E33

Quality finishes
with total control





| weco E33
| weco E13

Unlock your workshop's full potential with enhanced quality control

The Weco compact edgers represent the ideal entry range for workshops seeking precision, speed, and versatility in a compact and user-friendly system. Whether you're in need of a powerful all-in-one solution or a feature-packed machine for enhanced control, the Weco E13 and Weco E33 offer the perfect balance of performance and simplicity.

The Weco E13 combines cutting-edge technology, such as integrated Gravitech, with a new edging cycle and mini bevel to ensure precision, speed, and flawless aesthetics for every lens. It's the perfect choice for workshops looking to enhance their capabilities without complexity.

The Weco E33 is a complete solution for your lab, integrating tracing, blocking, edging, and drilling into one machine. With its improved edging cycle and mini bevel, it offers total control over precision and productivity, making it an excellent option for labs with limited space or those seeking an all-in-one, easy-to-use system.

Both systems in this Weco allow you to unlock your workshop's full potential, combining ease of use with enhanced quality control to streamline your workflow.

NEW CONTROLLED EDGING CYCLE

The new edging mode features an advanced anti-slippage cycle, keeping the ophthalmic lens stationary during edging to prevent misalignment or damage. Paired with Visionix's recommended double-sided pads, it ensures greater stability and precision. Adjustable edging wheel speed, combined with these pads, provides safe handling of high-value lenses and delivers flawless finishes with enhanced control.

A powerful package all-in-one



FOLLOW THE PROCESS

Take full control: edging is easy with an intuitive interface that guides you step-by-step in every phase of the process.



TRACE WITH PRECISION

A first for this serie, Gravitech powered tracing enables you to easily trace a demo lens in under 4 seconds! Its exceptional accuracy and precision produces results that are superior to a traditional mechanical tracer.



BLOCK WITH CONFIDENCE

The Gravitech Intuitive camera-based lens blocking and parallax-free has been simplified to 3 easy steps that help eliminate the possibility of human error during the blocking process.

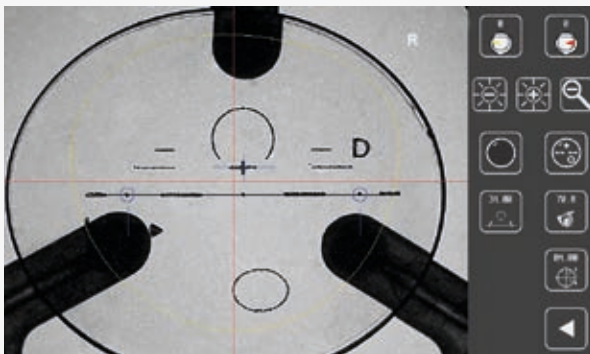


HANDLE THE VAST MAJORITY OF JOBS

Lens edging, mini-beveling, and drill mount work have never been easier. With Gravitech, you no longer need to waste time manually programming drill mounts. Simply scan the demo lens : the drill mount holes are instantly recognized, with only minimal adjustments needed. This streamlined process saves time while ensuring optimal precision.

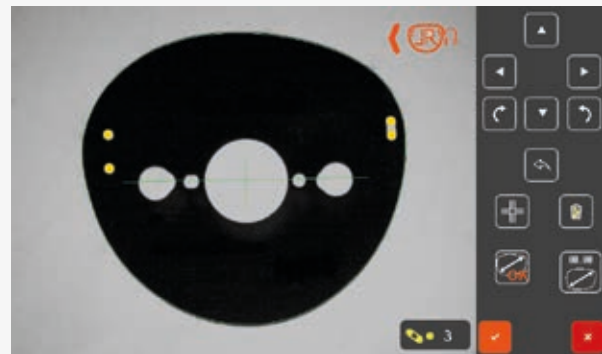
SEE EVERY DETAIL

These edgers include the best optical system on the market that allows you to center your lenses in a fully parallax-free environment. See every detail, even ones you can't see with the naked eye.



PROGRESSIVE LENSES AREN'T A TOPIC ANYMORE

You can edge even your most expensive progressive lenses with confidence, knowing you will be able to spot every marking and laser engraving.



TACKLE RIMLESS EYEWEAR EFFORTLESSLY

Gravitech 2.0 is the most advanced tracing system on the market; it will automatically detect drill holes, notches, and slots effortlessly with minimal adjustment needed.

Technical specifications

DIMENSIONS :

WIDTH	29.4 in (747.3 mm)
DEPTH	23.6 in (600 mm)
HEIGHT	17.9 in (455 mm)
WEIGHT	151lb (68,5 Kg)
VOLTAGE	230 V-50 Hz 115 V-60 Hz

Complies with safety directives:
EN 61010-1, Di 2006/42/EC, Di 2014/35/UE, Di 2011/65/UE, Di 2012/19/UE

Complies with EMC directives:
Di 2014/30/EC, EN 61000-3-3 (EN 55016-2-3 "Classe B"), EN 61000-3-2, EN 61000-6-2

UL standards for 120 V version:
UL/CSA 61010-1

WECO E33 / WECO E13 - All-in-one edger

Mechanical Tracing*	<ul style="list-style-type: none"> • Automatic 3D - Tracing • Monocular / Binocular Tracing • Smooth manual frame clamping
OPTICAL TRACING GRAVITECH 2.0	<ul style="list-style-type: none"> • Accurate optical detection of demo lenses and patterns (including drill hole detection) • Gravity oriented 1:1 reproduction of the demo lens with absolute reproducibility • Shape Creator, an innovative way to create shapes and trace frames optically.
Shape Administration	<ul style="list-style-type: none"> • Job Memory: 2,000 Jobs (including Centering and Edging Parameters) • Shape Memory: 10,000 Shapes (including Drill Hole Parameters) • Shape Modification: A / B / 1/2 B/ Circumference / Radius / Shape-Axis
Centering	<ul style="list-style-type: none"> • Single Vision, Bifocal, Trifocal, Progressive (Markings and Engravings) • Manual centering: Parallax-free digital / optic / geometric • Lens fitting check (Measured prior blocking)
Edging	<ul style="list-style-type: none"> • Processing of Glass, CR39, High Index, Polycarbonate and Trivex • Two Sided Measurement of lens with one feeler • V-Bevel and mini bevel • Polishing of Flat and V-Bevel
Special Features	<ul style="list-style-type: none"> • Grooving with a defined angle of 10° incl. different programs • Variable Groove width and depth • Chamfering: Front in one step / Back in 3 steps • Drilling with a fixed angle of 10°
Communication	<ul style="list-style-type: none"> • OMA V3.07 • Prepared for Remote Tracing
Easy database import / export tool	<ul style="list-style-type: none"> • USB Connection • Direct Software Upgrade • Easily upload Shape Data such as Silhouette

*available with E33

	E33	E13	E13 GROOVE
Optical Tracing	•	•	•
Mechanical Tracing	•		
Mini bevel New	•	•	•
Grooving	•	•	•
Super-Hydrophobic Lens Cycle	•	•	•
Small Eye Sizes < 21mm	•	•	•
Color LCD Display	•	•	•
Touch Screen Interface	•	•	•
Drilling	Fixed 10°	Fixed 10°	



INNOVATION TO UNLOCK YOUR POTENTIAL

VISIONIX INTERNATIONAL SAS

2 Rue Roger Bonnet, 27340 Pont-de-l'Arche - France
Tél. + 33 232 989 132 - Fax + 33 235 020 294
contact@visionix.com

www.visionix.com