

VX 40

Complete lens analysis
in 30 seconds



Full detailed analysis of a lens

Visionix Wavefront technology allows you to have a complete detailed analysis of a lens at the push of a button. Experience the next-generation automated lensmeter with the VX 40. The VX 40 can detect and analyze single vision, bifocals, and progressive lenses and is compatible with all lens technologies and brands.



One-Touch Lens Analysis in 30 seconds

FULLY AUTOMATED

The VX 40 is fully automated. After the operator places the frame and initializes the start procedure, lens analysis and measurement is completely automatic. Even left / right eye movement requires no user input.

EASY TO USE

The unique lens holder system allows for fast insertion of the frame with only one hand! After pushing the start button, the whole process works on its own. The VX 40 allows you to spend more time with your patients and less time on analysis.

AUTOMATIC LENS ANALYSIS

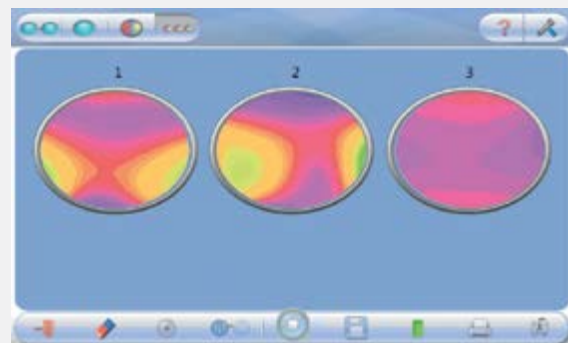
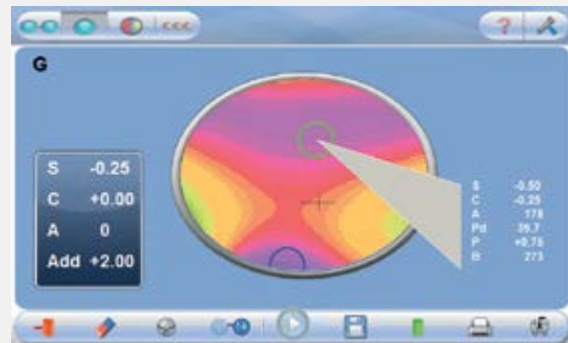
The VX 40 detects all lenses, including bifocals, progressives, freeform, and single vision lenses. It is compatible with most lens technologies and brands.

COMPLETE VISUAL ANALYSIS

The VX 40 analyzes the lenses and conveys the measurements to the operator in a visual topographic map. The three PowerMaps provide a visual representation of the lens design characteristics. These lens types no longer have to be a mystery to you and will allow you to improve lens recommendations and assist in troubleshooting eyewear.

SIDE BY SIDE COMPARATIVE LENS ANALYSIS

Compare and analyze multiple lens types with your patients with a side by side comparison to highlight advanced lenses and visually support your recommendation for multiple pairs.



Connect to the Visionix Digital Refraction Suite and other Devices / EMR!



**EHR/EMR
CAPABLE**

Technical specifications

GENERAL DATA:

WIDTH	220 mm (8.66 in)
DEPTH	240 mm (9.44 in)
HEIGHT	455 mm (17.90 in)
WEIGHT	9 kg (19.8 lbs)
VOLTAGE	115 V - 230 V 50 Hz - 60 Hz
STANDARDS	CE

	vx 40
	MEASURABLE RANGE
Number of analyzed points	Up to 1350
Sphere power	-15 - +10D (step 0.01, 0.06, 0.125, 0.25D)
Cylinder power	0-10D (step 0.01, 0.06, 0.125, 0.25D)
Cylinder axis	0-180° (step 1°)
Addition power	0± 3.5D (step 0.01, 0.06, 0.125, 0.25D)
Prism power	0± 10 Δ (step 0.01 Δ)
PD measurement	Mono / Bino
Cylinder	-, +
	GENERAL
Printer	Internal
Screen	LCD/16M colours, 7"
Light source	LED - 730 nm
Working conditions	10 to 40°C
Data output	RS-232, Bluetooth



INNOVATION TO UNLOCK YOUR POTENTIAL

VISIONIX US

160 Eisenhower Lane North, Lombard, IL 60148
Tel: US: +1 (800) 729-1959
Canada: +1 (905) 760-2420
contact.us@visionix.com

www.visionix.com/us